

# Value of Implementing Virtual Training Technology in Welder Training

**Vermeer®**



**8<sup>TH</sup> ANNUAL NATIONAL WELDING  
EDUCATORS  
CONFERENCE**



**cwbgroup**

**David Landon  
Vermeer Corporation**



# Dr. Ken Ham

The question should not be whether  
someone is biased or not.

The real question we should ask is,

*Which biased is the best biased to be  
biased with?*





# WHO WE ARE





# FORAGE SOLUTIONS



**BALERS**

**RAKES**

**MOWERS**

**BALE PROCESSORS**

**TEDDERS**





# SPECIALTY EXCAVATION SOLUTIONS



**SURFACE  
EXCAVATION MACHINES**



**TRACK TRENCHERS**





# ENVIRONMENTAL SOLUTIONS



**BRUSH CHIPPERS**



**COMPOST TURNERS**



**GRINDERS**



**STUMP CUTTERS**



**TROMMEL SCREENS**



**WHOLE TREE CHIPPERS**





# UNDERGROUND SOLUTIONS



**AXIS® GUIDED BORING SYSTEM**



**HORIZONTAL DIRECTIONAL DRILLS**



**MINI SKID STEERS**



**UTILITY PRODUCTS**



**VERMEER PIERCING TOOLS**







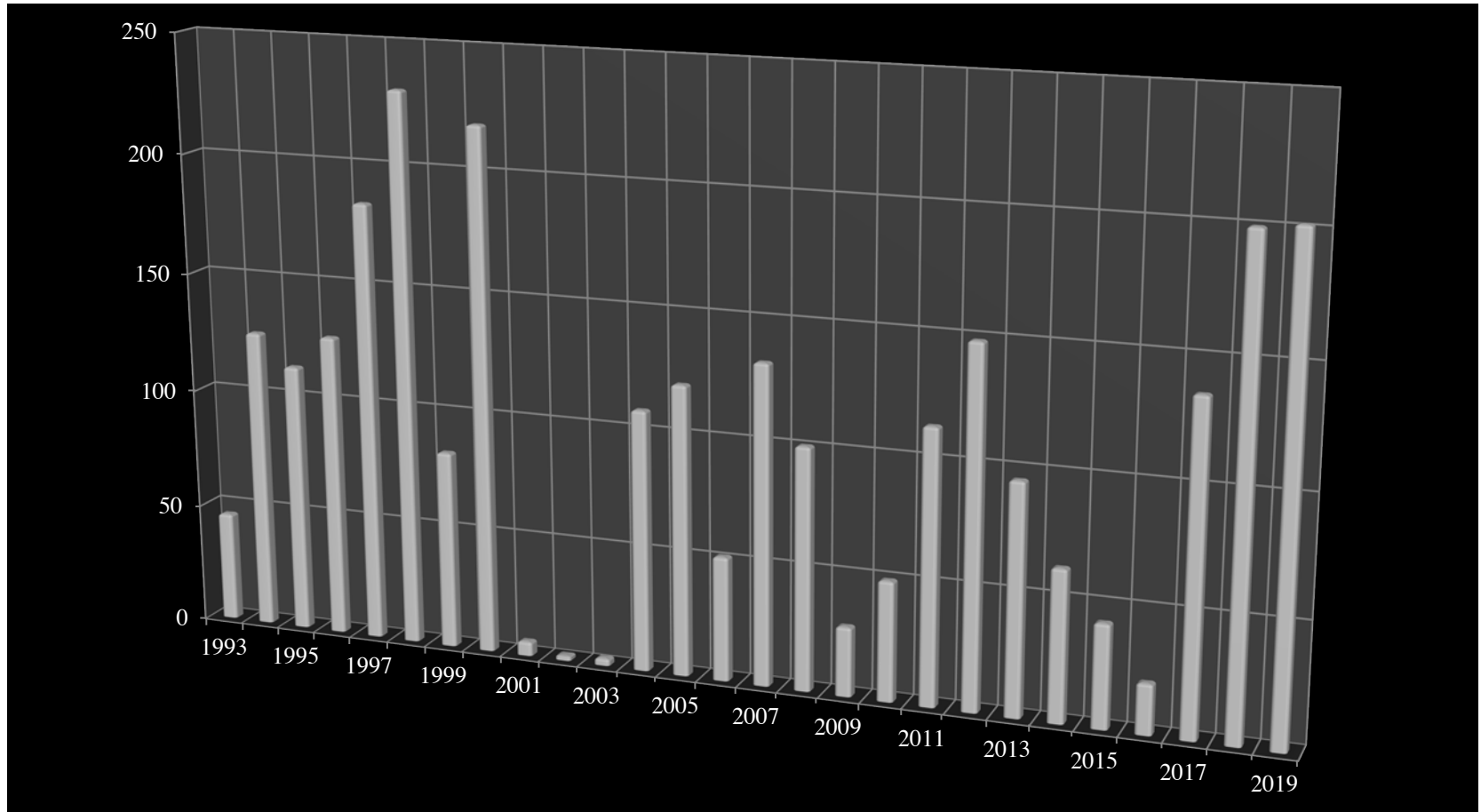
# LEAN CULTURE







# Number of welders trained

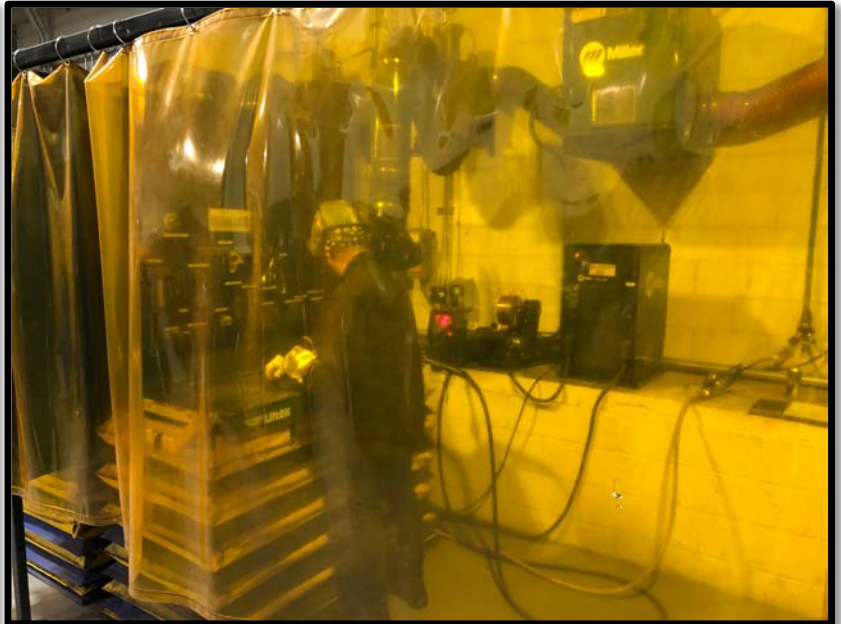


**2759**





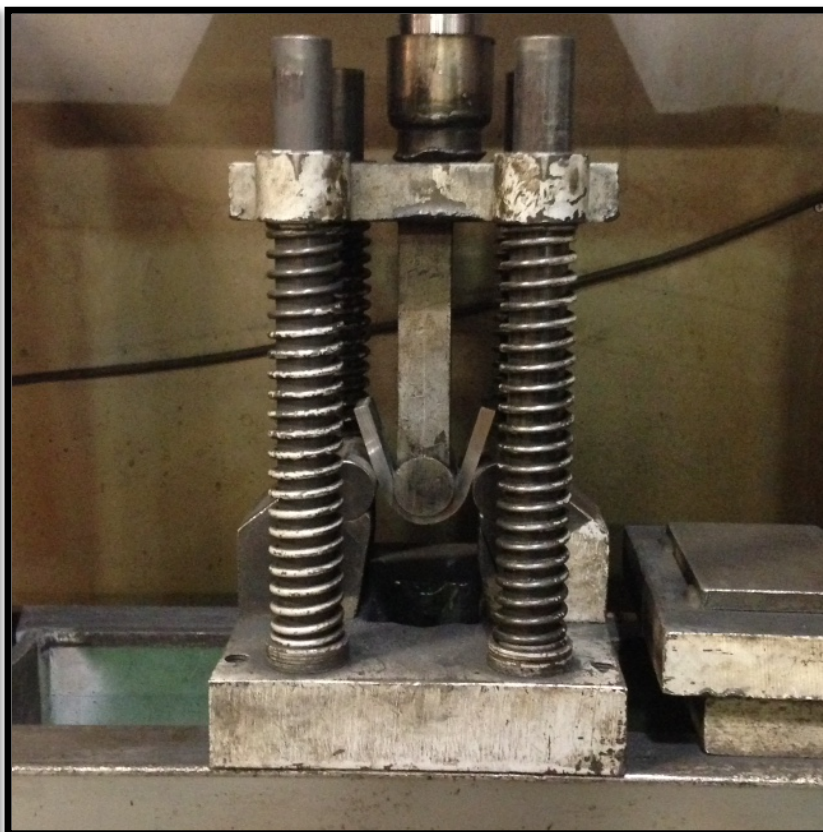
# Traditional training







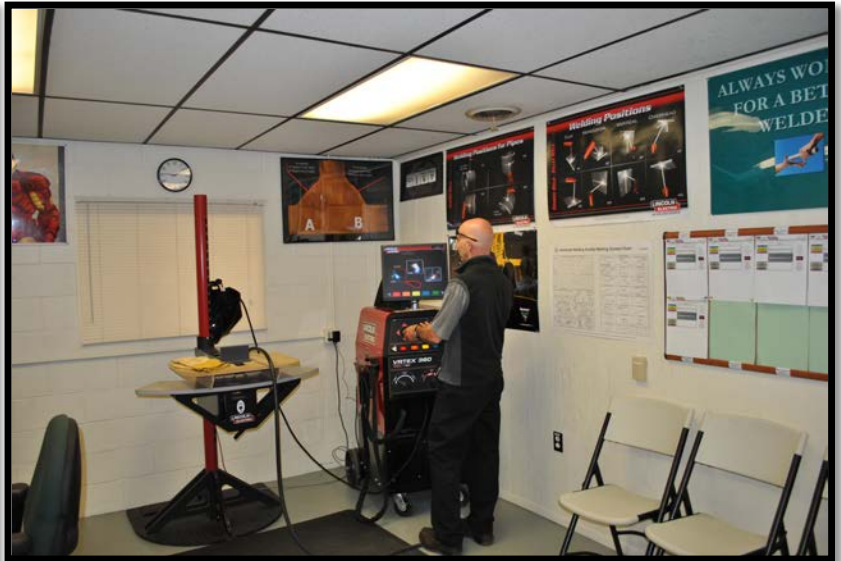
# AWS D14.3 qualification







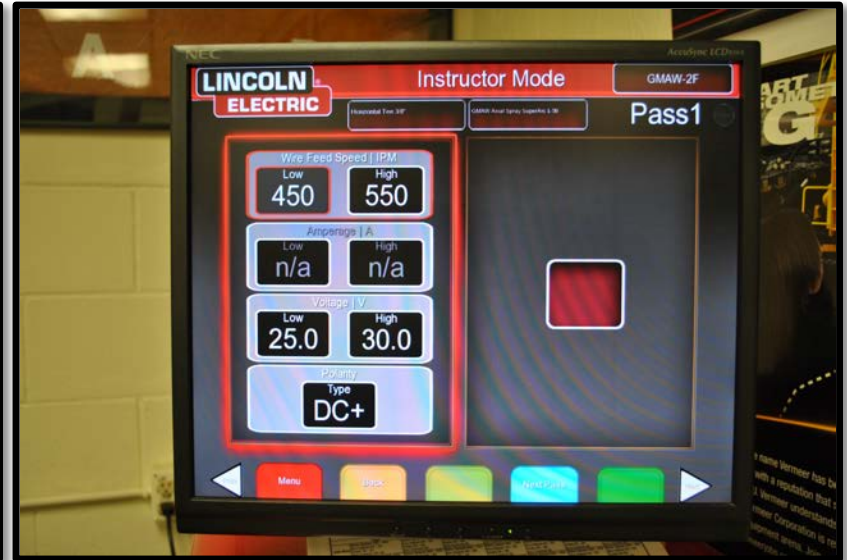
# VR since 2008







# Tee joint fillet







# Lap joint fillet weld





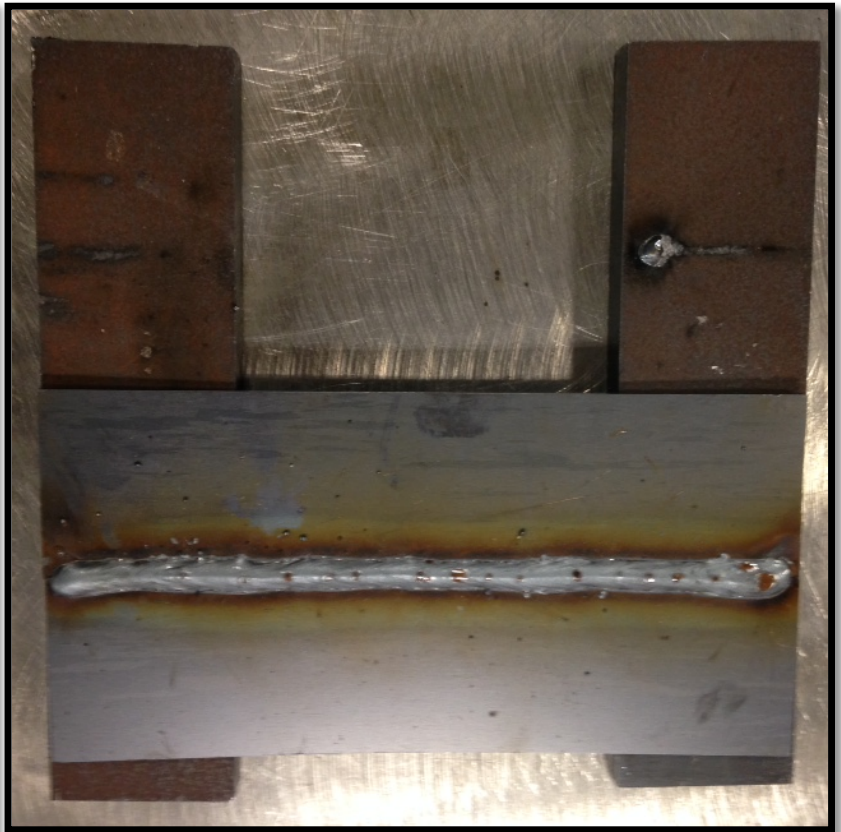


# 3-pass fillet weld





# Square groove (butt weld)







# 10mm qualification test, 1<sup>st</sup> pass





# 10mm qualification test, cap passes







# Cutting bend coupons





# Total time



5-7 minutes



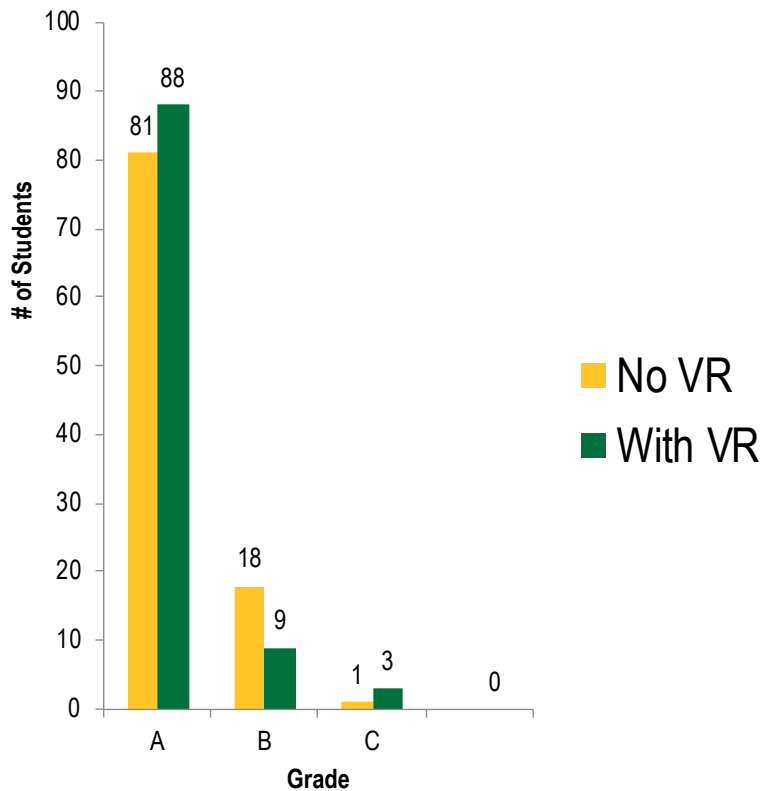
105 minutes





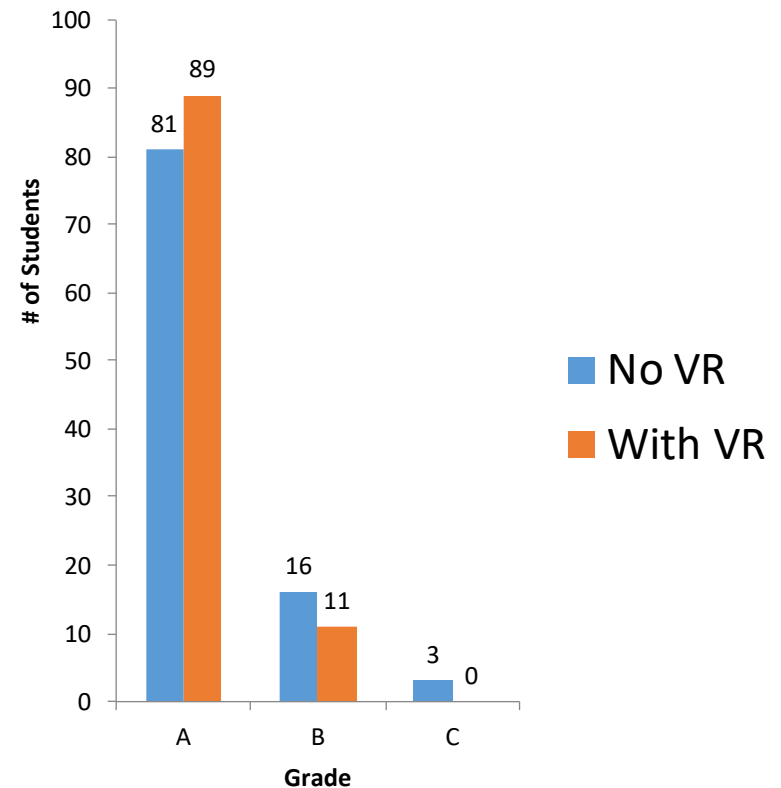
# Qualified on first attempt

## 1G-L Grades



9% improvement

## 1G-UL Grades



10% improvement



# Savings for 100 welders



- Elimination of practice test - \$25,000
- 9% improvement on 10mm test - \$2250
- 10% improvement on 25mm test - \$2500





# **VERMEER** **STRONG**

Vermeer Corporation reserves the right to make changes in engineering, design and specifications; add improvements; or discontinue manufacturing at any time without notice or obligation. Equipment shown is for illustrative purposes only and may display optional accessories or components specific to their global region. Please contact

your local Vermeer dealer for more information on machine specifications.

Vermeer, the Vermeer logo, Equipped to Do More and Navigator are trademarks of

Vermeer Manufacturing Company in the U.S. and/or other countries.

© 2019 Vermeer Corporation. All Rights Reserved.