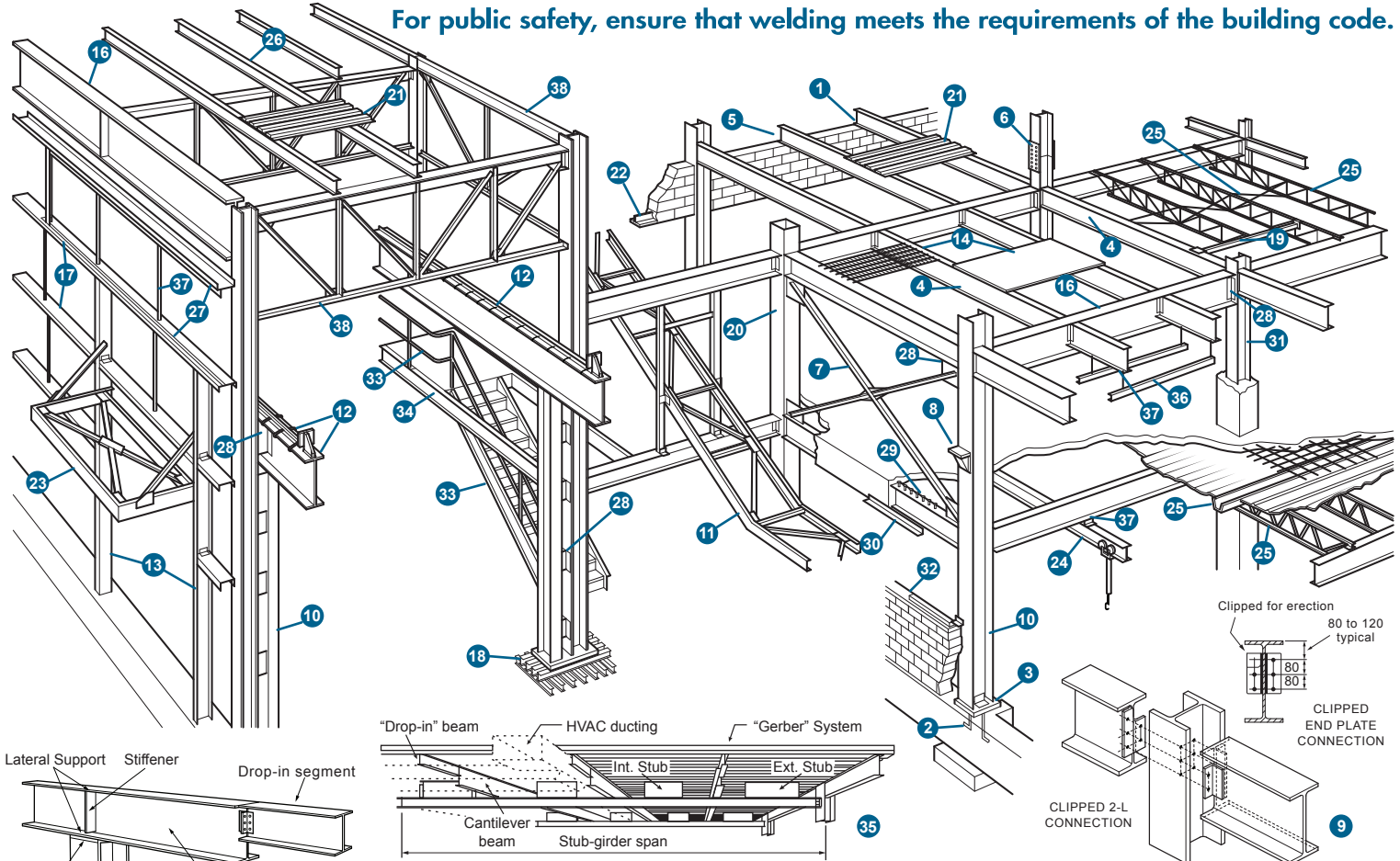


WELDED BUILDING COMPONENTS

DOES THE WELDING COMPLY WITH THE BUILDING CODE?

To comply with the Building Code, fabricators and erectors welding steel, aluminum and reinforcing bars must be certified by the Canadian Welding Bureau to CSA Standards (See Clauses 4.3.3, 4.3.4 and 4.3.5 of the National or Provincial Building Code and Clause 24 of CSA Standard S16 "Limit States Design of Steel Structures"). These companies may weld structural steel, metal pilings, cladding, curtain walls, window clips, equipment supports and any other components as illustrated below.

For public safety, ensure that welding meets the requirements of the building code.



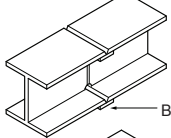
LEGEND

Most of the above components may be welded during fabrication or installation

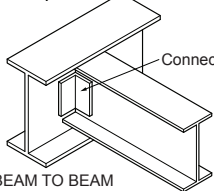
1. Anchors (wall) for beams or open-web steel joists
2. Anchor rods for structural steel
3. Base plates of steel for steel columns
4. Beams
5. Bearing plates for structural steel
6. Bolts
7. Bracing for steel members or frames
8. Brackets attached to the steel frame
9. Clipped double connection
10. Columns
11. Conveyor structural steel frame work
12. Crane, girders, rails and stops
13. Door frames constituting part of and connected to the steel frame
14. Floor and roof plates (raised pattern or plain), grating, connected to steel frame
15. Gerber girder
16. Girders
17. Girts
18. Grillage beams of steel
19. Headers or trimmers for support of open-web steel joists where such headers or trimmers frame into structural steel members
20. Hollow structural section (HSS) column
21. Light-gauge cold formed steel used to support floor and roofs
22. Lintels attached to steel frame
23. Marquee or canopy (structural frame only) when forming an integral part of the steel frame
24. Monorail beams of standard structural shapes, attached to steel frame
25. Open-web steel joists, bridging and accessories when supplied with steel joists
26. Purlins
27. Sash angles connected to the steel frame
28. Separators, angles, tees, clips and other detail fittings essential to the structural steel frame
29. Shear connectors
30. Shelf angles attached to the steel frame
31. Steel cores for composite columns
32. Steel window sills attached to the steel frame
33. Steel stairs and handrails
34. Struts
35. Stub girders
36. Suspended ceiling supports of structural steel shapes 75mm or greater in depth
37. Ties, hangers and sag rods forming part of the structural frame
38. Trusses and brace frames

Steel Beams and Column Connections for Use in Single Family Dwellings

BEAM SPLICE

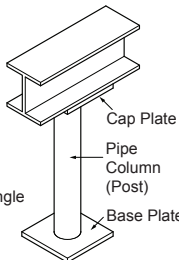


Backing Bar



Connection Angle

BEAM TO BEAM FRAMING



Cap Plate
Pipe Column (Post)
Base Plate

BEAM TO POST WITH CAP & BASE PLATE

Structural drawings with an engineer's stamp are required for welded or bolted steel connections, splices and beam framing.

Reproduced by permission of the Canadian Institute of Steel Construction

To verify the welding certification status of any fabricator/erector, or for training in structural steel welding inspection, call the Canadian Welding Bureau at 1-800-844-6790

www.cwbgroupp.org

